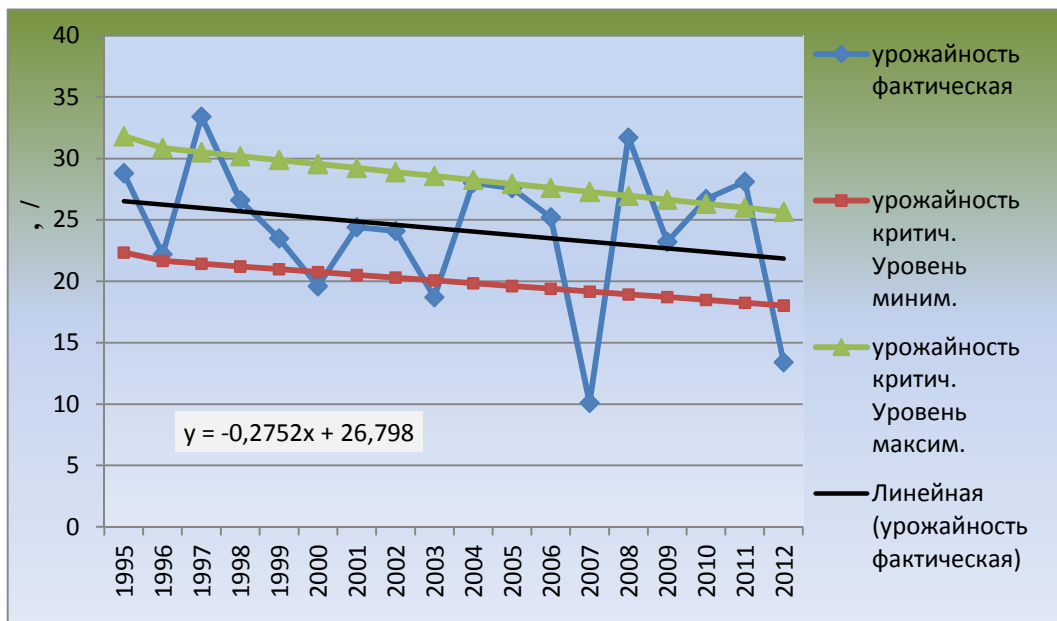


The article demonstrates the influence of climatic conditions on the results of the plant crop production in the Republic of Moldova and presents the dynamics of the cereal crop yields in the country in 1995-2012 which reflects low stability of cultivated crop productivity. The work presents a yield analysis for major types of crops - wheat, corn, sunflower - in the period of 1960-2012 and, based on the average annual metrics identifies the four phases of the economic cycle: recovery, prosperity, recession, and depression. Finally, the article provides a forecast of crop yield dynamics for the forthcoming years.

Key words. Weather conditions, crop yield, crop yield stability (volatility), economic cycle, wheat, corn, sunflower.

(.1). 3/5) 1995-2012



. 1.

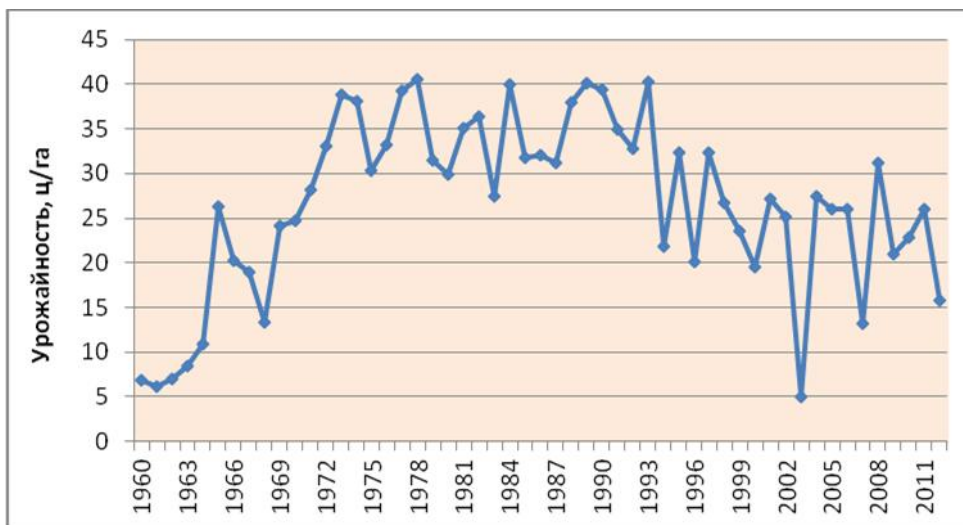
1995-2012 . . .
2013 [1].

$y = -0,2752 + 26,798x$

0,2572 . [2, .116-117]:
 7,5% 17,5%;
 17,5%.
 18 17,5%.
 4 22,2%,
 27,8%.
 7

1960 – 2012

1190 . . . 81,6% .
 50 .
 [3, с.135-143] [1, с.338-339].
 2.
 53 - 4 . (1960 – 1973)
 6,2 / 1961 38,8 / 1973 .
 14
 , 1968 1961 1965 , . . .
 5



.2.

1960-2012 .()

: [1] [3]

53- 1973 – 1993 , « »
 - 1975 1978 .
 (1993 – 2000)
 1997 2000 .
 23,4 / ,
 2003 ,
 5 / .
 300 .
 (4-7)

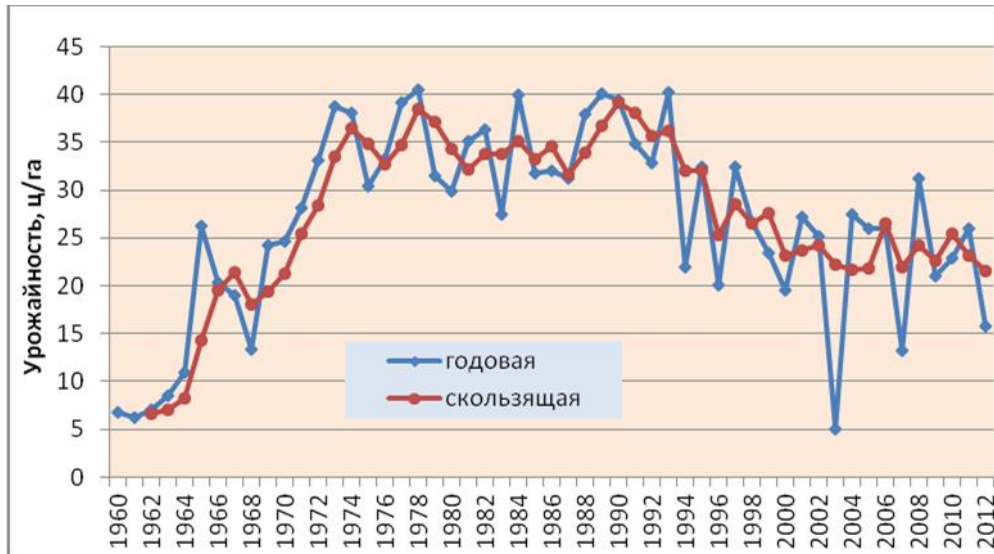
(),

3

(.3).

- 29,5% 1,25

36,9%,



.3.

1960-2012 . ()
[1] [3].



.4.

1962-2012 . ()

53

4

1962 1976 .

(1976 - 1991 , 32,7 -39,2 /),

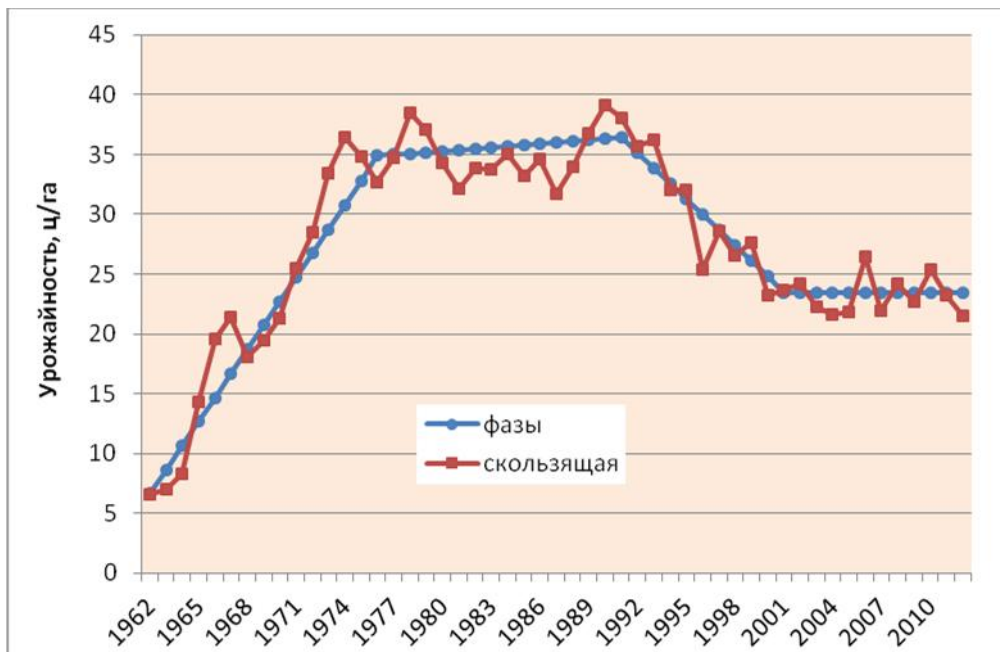
6,6 /

36,4 / .

(1991 – 2001 , 38,0 -23,2 /),
23,4 /).

(2001 – 2012 , 21,5 – 26,5 /

.4
(.5).



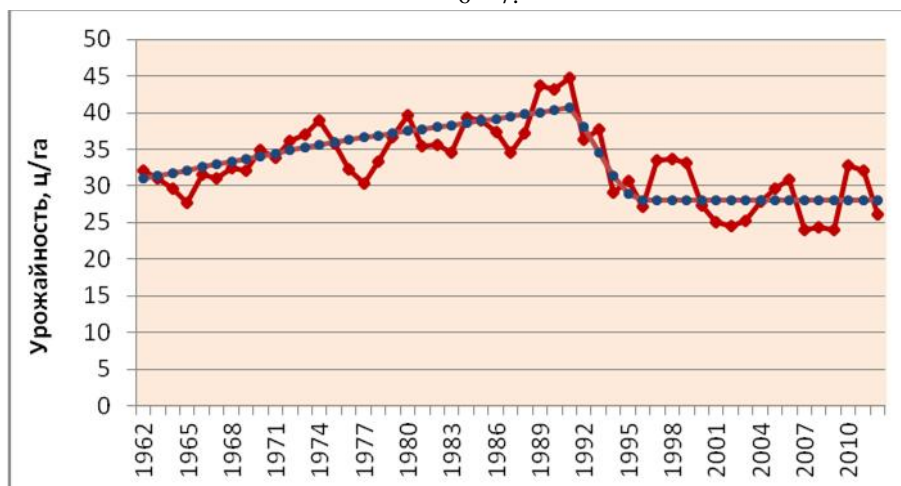
.5.

1962-2012 . (

)

1962 – 2012 ,

6 7.



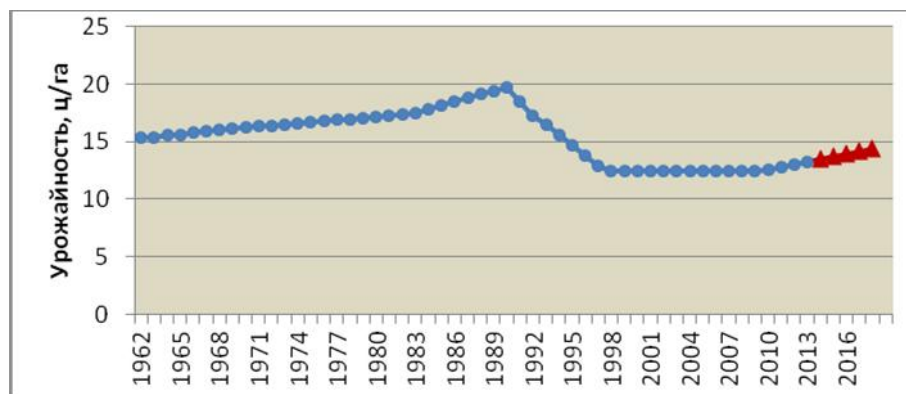
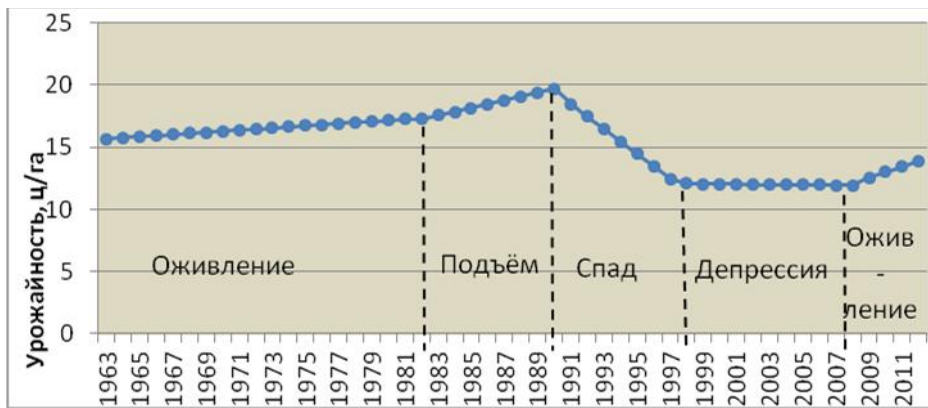
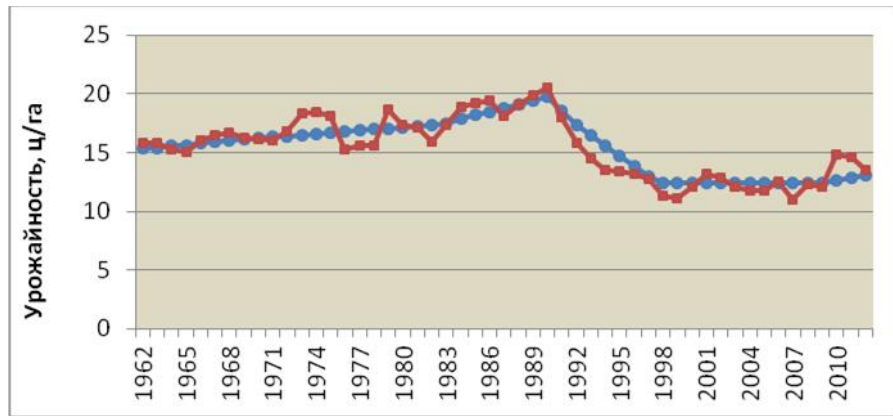
.6.

1960-2012 . (

)

2013-2018

0,19 / .



7.

1960-2012 .

1. . - Ch.: Statistica, 2013, - 556 .
 2. . « .) .- : . .,2013.- 207 .
 3. . . . - Ch.:ASEM, 2006.-
- 384 .